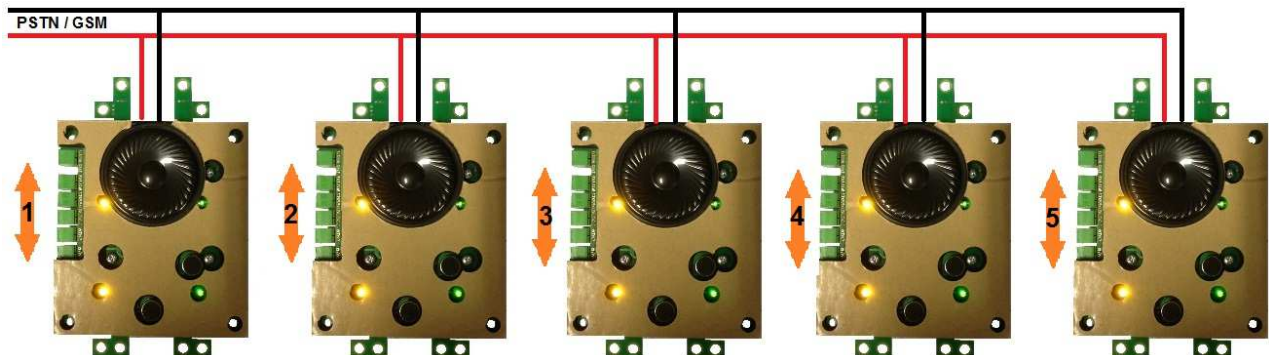
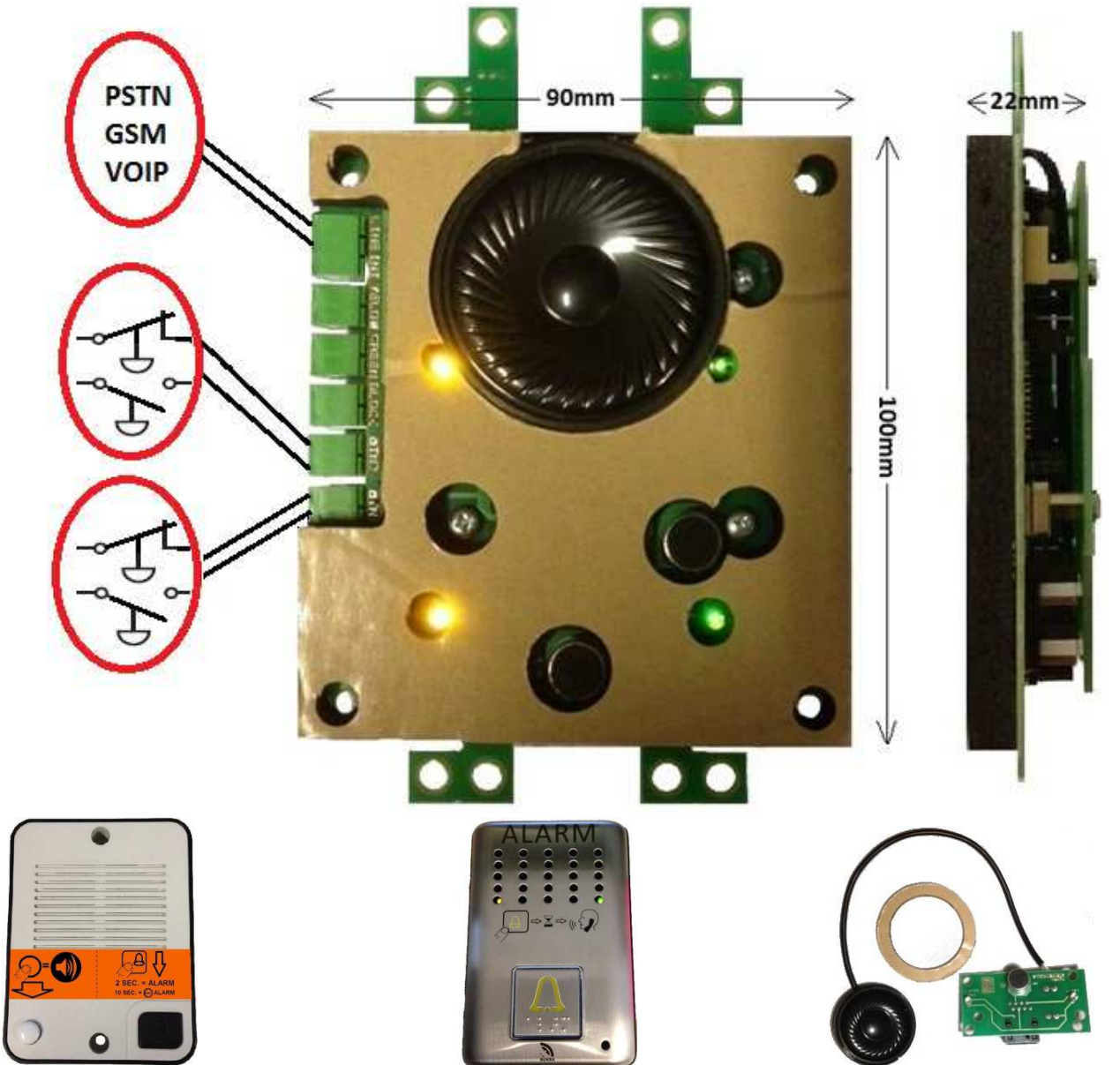


Assembled by	:	Engineer:
Installation date	:	
Phone number elevator	:	



Read this manual carefully before you start the installation or programming

RUKRA ELEVATORPHONE

- The RUKRA elevator phone does not require extra additional power sources for a proper functioning
- Up to 5 RUKRA elevator phones can be connected to one phone line with selective callback option
- 6 Alarm numbers, 1 servicecall number, 1 failure number and 1 technical number

If an emergency call is not answered or the line is busy, the next number in the list will be automatically dialed and the cycle is repeated up to 9 times (programmable). The RUKRA elevator phone makes a servicecall in a time to set (01 to 59 days) and makes this call to the online RUKRA Web based Call Center.

PROGRAMMING

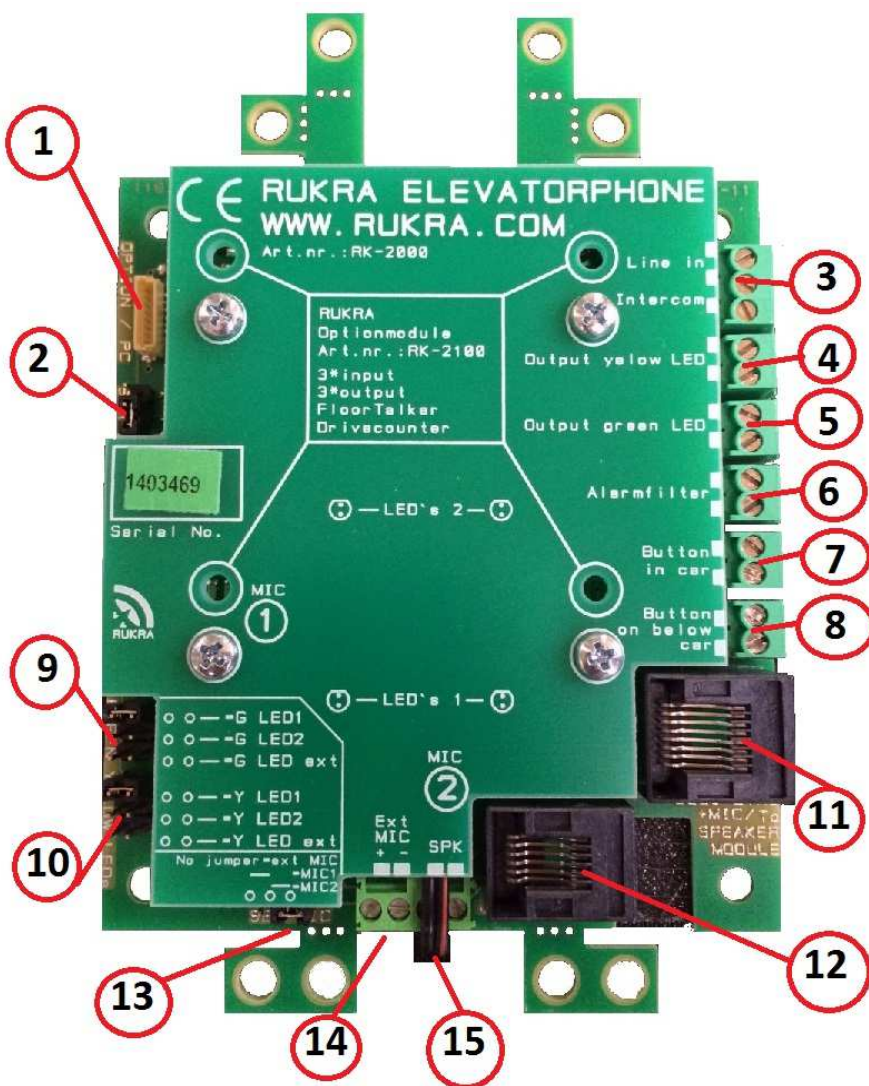
- ☞ Local with the smart RUKRA Programmer, with a Tablet / Laptop or from the Machineroom intercom.
- ☞ Remotely with a regular telephone or a computer with Black-Box modem.

To the programming menu

- ☞ Call the RUKRA elevator phone by phone, smart programmer or machine room intercom.
- ☞ After the RUKRA elevator phone has recorded automatically and you are in the voice listening mode, press key # 0000 (password is 0000) if the password is oke you will hear a three-tone beep to confirm, then you have 10 seconds to start programming. (NOTE !!: After programming a function, you must wait until the RUKRA elevator phone beeps 1 second, then the programming is stored in the memory.

EXPLANATION OF THE CONNECTIONS

- 1) Programmer connector
- 2) Jumper; If the jumper is installed: after call you are directly in the programming menu.
- 3) LINE-Phone line connection, INT- = activate machine room intercom.
- 4) Output to switch external yellow LED – galvanically isolated
- 5) Output to switch external green LED - galvanically isolated
- 6) Input to the alarm filter, use only a potential free NO or NC contact
- 7) Input for alarm button for emergency call from in the lift car with the alarm filter. Use only a potential free **NO** or **NC** contact.
- 8) Input for alarm button on and/or below car. For an emergency call without the alarm filter, use only a potential free **NO** or **NC** contact.
- 9) Jumper to select which of the 3 green LED'S is active
- 10) Jumper to select which of the 3 yellow LED'S is active
- 11) Modular Plug&Play RJ45 connector for external small speechmodule with LED'S, MIC, SPEAKER and BUTTON
- 12) Modular Plug&Play RJ12 connector for alarm buttons with speaker/mic on and below the car
- 13) Jumper for selection which of the 3 microphones is active
- 14) Screw connector for an external or extra microphone
- 15) Screw connector for external speaker



PARALLEL CONNECTION OF THE RUKRA ELEVATOR PHONES (MAXIMUM 5 PIECES !!)

Parameter 45 activates the parallel connection and with parameter 46 you give the RUKRA Elevator Phone a number followed by 1 till 5 (between adjacent numbers may therefore not a number missing. (Lift 1, 2, 4, =error).

Once a RUKRA Elevator Phone is having a conversation and another parallel connected RUKRA Elevator Phone is activated the yellow LED will flash slowly and when the line is free the RUKRA Elevator Phone will automatically dial the emergency number(s).

When you call back to the RUKRA Elevator Phone the first RUKRA Elevator Phone will take the line after 2.5 seconds. Automatically 2 till 5 will take the line and you hear at every RUKRA Elevator Phone that takes the line a beep in your phone. When you hear the beep of the elevator that you want to connect touch constantly on your keypad the follow number of the RUKRA Elevator phone. After a while you will hear a confirmation tone and you are connected to talk or program parameters.

PROGRAMMING PHONENUMBERS

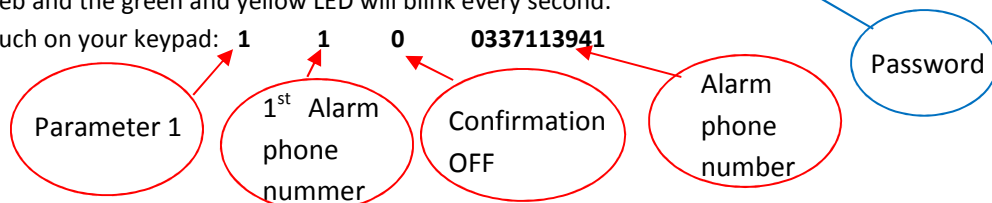
Alarm call phone numbers:

PARAMETER	VALUE	DESCRIPTION	FACTORY SETTING
1	P T NN	NN = ALARM phone number P in combination with confirmation T	NONE

P = alarm phone number 1 till 6
 T= 0: Call confirmation OFF / T= 1: Call confirmation ON
 NN = alarm phone number (max. 16 digits) See the table for multiple characters

Example: You want to program the 1st alarm phone number 0337113941 without confirmation:
 Call the RUKRA Elevator Phone, After he record touch on your keypad: #0000 You hear a double beeb and the green and yellow LED will blink every second.

Touch on your keypad: 1 1 0 0337113941



Beschrijving	toets in
0 - 9	0 - 9
#	#
*	**
flash	*#
pauze	*0

and wait until you hear a beep of a second, the emergency number is stored in the memory and you can continue to the next alarm phone number or parameter or disconnect by touch a 9 on your keypad or simply disconnect the call.

3-Day test phone number (servicecall 3-day test)

PARAMETER	VALUE	DESCRIPTION	FACTORY SETTING
22	T NN	NN = TEST (SERVICE) phone number in combination with confirmation T	NONE

T= 0: Call confirmation OFF / T= 1: Call confirmation ON
 NN = test phone number (max. 16 digits) See the table for multiple characters

Technical phone number (for function stuck button and audio fault)

PARAMETER	VALUE	DESCRIPTION	FACTORY SETTING
21	T NN	NN = TECHNICAL phone number in combination with confirmation T	NONE

T= 0: Call confirmation OFF / T= 1: Call confirmation ON
 NN = Technical phone number (max. 16 digits) See the table for multiple characters

PROGRAMMING GENERAL OPERATION

PARAMETER	VALUE	DESCRIPTION	FACTORY SETTING
31	A	servicecall 3-day test on / off	0
A = 0: servicecall off / A= 1: servicecall on with set interval time (parameter 59)			
59	gg	Interval of servicecall (01 t/m 59 days)	03
gg = interval servicecall is adjustable from 01 to 59 days			
45	P	Activate parallel mode (multiple RUKRA Elevator Phones on one line) 0 / 1	0
P = 0: Parallel mode not activated / P = 1: Parallel mode is activated.			

46	Q	Number of rings before the RUKRA Elevator Phone takes the line. / Or for multiple RUKRA Elevator Phones on 1 line the sequence number of the lift	2
Q = Number of tones before the RUKRA Elevator Phone takes the line , adjustable from 1 to 5			
51	D	Duration of talk time in minutes	*
D = Duration of the talk time during an alarmcall, (0-9,*,#) *= 15minutes, #= endless			
53	W	Time delay of the alarmbutton in car to make an alarmcall	05
W = Time of pressing the alarmbutton in the car to make an alarmcall. 01 to 39 seconds			
52	Z	Time delay of the alarmbutton(s) on and below the car to make an alarmcall	02
Z = Time of pressing the alarmbutton to make an alarmcall. 01 to 39 seconds			
33	I	Type alarmbutton in car N.O. or N.C	0
I = 0: Normally Opened contact / I = 1: Normally Closed contact			
39	I	Type alarmbutton(s) on or below the car N.O. or N.C	0
I = 0: Normally Opened contact / I = 1: Normally Closed contact			
44	XXXX	Password (maximum 4 figures)	0000
XXXX = Password (touch on your keypad before programming parameters)			
9		End of programming	NA

Audio settings:

71	ff	Volume speaker (01 – 16)	12
72	rr	Sensitivity microphone (01 – 16)	02
73	gg	Balance between speaker and microphone (01 – 16)	05

After entering a new setting it is immediately saved and you can hear while programming if the setting is oke.

Instead of giving the codes, you can use the keypad on your phone with the following key combinations to make the volume higher or lower: * = **volume lower** and # = **volume higher**



If no key is pressed within 5 seconds, the setting is automatically saved

06	t	Automatically alarm button test	1
t= 0 alarm button test off / T= 1 alarm button test on Note, if the push button test is activated you also must program the phone number for the technical call (parameter 21)			

TECHNICALL SPECIFICATIONS

Audio	: Full duplex and programmable by phone from distance by changing parameters
Alarm button(s)	: Can be used as NO (= normally open) or NC (normally closed)
Periodic self / line test	: Adjustable from 01 to 59 days (can be combined with an audio test)
Alarm receivers	: Web Based Call center / PSTN and mobile phones
Programming	: Locally and from distance
Meets the standards	: EN 81-28 / EN 81-70 / EN 81-71 / EN 81-72
Min./max. voltage phone line	: 18V/18mA / 55V
Voltage output LED'S	: Maximum 48V DC / 0,5A
Dimensions	: H x W x D - 100 x 90 x 22mm
CE	: The CE symbol indicates that the product complies with the European directives. On our website you can download the declaration of conformity.